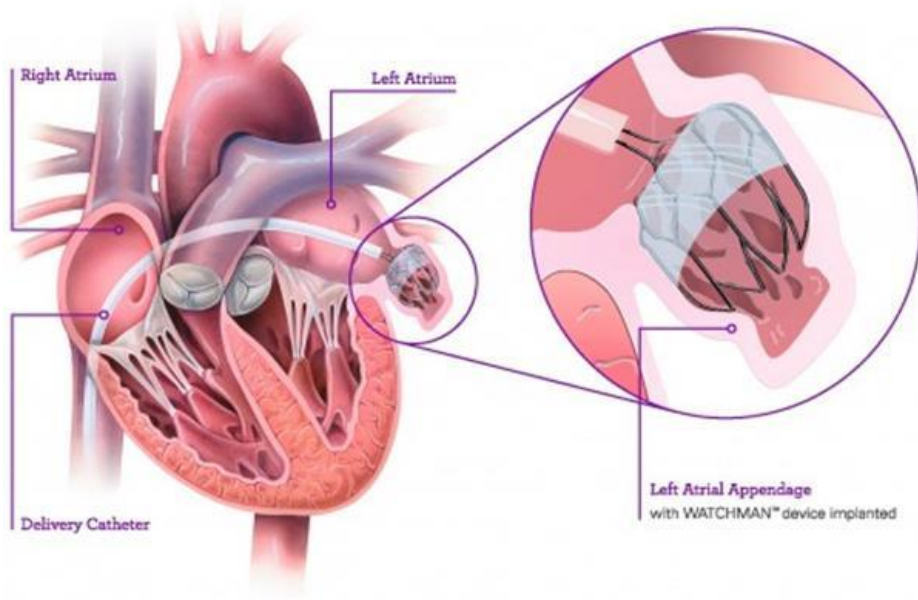


## CIOX CODING TIP

Although we had Coding Clinic guidance prior to FY 2019, the guidance had not officially been published in the Official Coding Guidelines for ICD-10-PCS until now.



<http://www.drholdright.co.uk/dynamicpage.php?pg=treatments&hd=Treatments&pageid=MTIy>

## Guideline Alert

# B6.1A

For FY 2019 year an addition was made to General PCS Guideline B6. 1A that states, "If a device that is intended to remain after the procedure is completed requires removal before the end of the operative episode in which it was inserted (for example, the device size is inadequate or a complication occurs), both the insertion and removal of the device should be coded."

## Placement of Watchman™ left atrial appendage device

In Coding Clinic, 4th Quarter, 2017, p.104-105, the publication provides an example in the context of this new addition to the guideline. In summary, a watchmen device was inserted into the left atrial appendage but was found to be unstable due to improper size of the device. The device was removed prior to the end of procedure.

## Applying the Guideline

We would code both the **insertion** and the **removal** of the device.